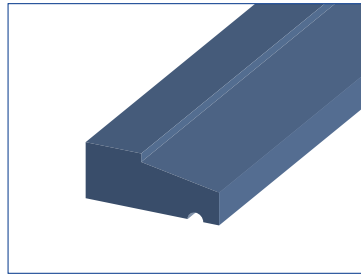
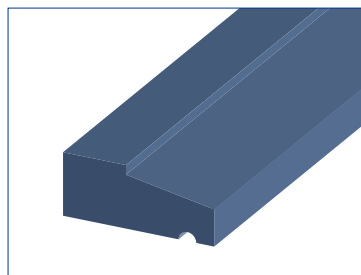
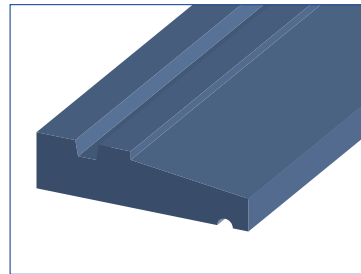


CILLS

Standard Precast Cills are made in the three sizes as shown, however special sections can be made to customers design and specifications.

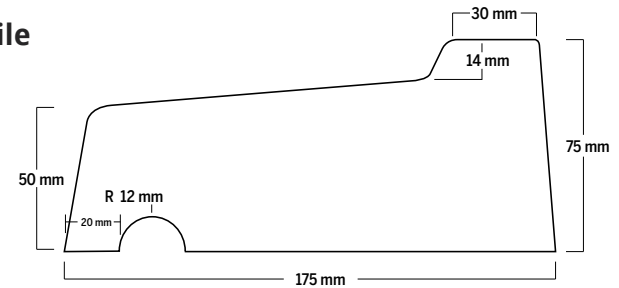


- Cills cast using a C30 concrete in steel moulds
- All exposed surfaces finished smooth
- Reinforcement is for handling (T12) with 30mm cover from bottom



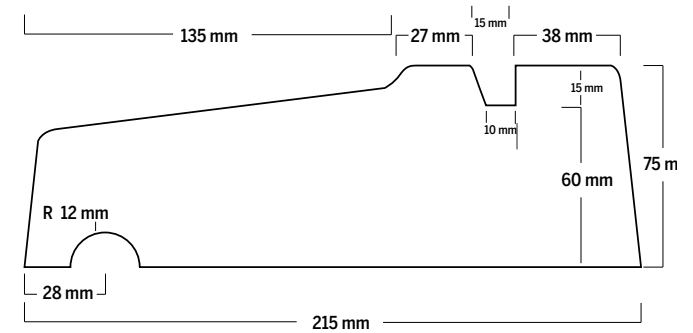
Precast S1 Cill (175x75-50x Length) Profile

- Stock sizes (mm) - 600, 900, 1200, 1500, 1800, 2100, 2400 and 3000



Precast S2 Cill (215x75-50x Length) Profile

- Stock sizes (mm) - 600, 900, 1000, 1200, 1500, 1800, 2100, 2400 and 3000



Precast S3 Cill (200x90-50x Length) Profile

- Stock sizes (mm) - 600, 900, 1200, 1500, 1800, 2100, 2400 and 3000

